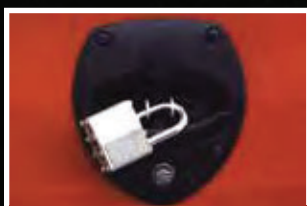


MINIMIZER PRODUCTS: **TOOL BOXES**



Minimizer Tool Boxes - like our fenders – are tough enough for the most demanding work sites and weather. Made of solid roto-molded 100% composite materials our tool box will never rust, crack or need paint. Don't let the scale fool you – these boxes are no lightweights. They're tougher than metal boxes weighing 10 times more: and the $\frac{3}{4}$ " gutter and Seal Tight™ weather stripping means Minimizer Tool Boxes are nearly weather-proof.

Our tool boxes mount easily to most trucks in minutes. Heavy-duty hardware keeps the tool box as secure as a safe.



The "Vector T Latch" is number one in durability. It comes with a (standard) built in cylinder lock and two keys.



"Super Springs" provide for a self-lifting door on the chest style boxes.



With a $\frac{3}{4}$ " gutter and "Seal Tight" weather stripping – weather-tight.



The heavy-duty universal mounting brackets keep your tool box secure.



Poly Chest Box:

3 standard sizes:

T50CHMIN - 20" x 19" x 50" 42 lbs.

T36CHMIN - 20" x 19" x 36" 30 lbs.

T24CHMIN - 20" x 19" x 24" 27 lbs.

Bracket Kit: Part #104304 - (250lbs. max)



Poly Underbody Box:

4 standard sizes:

T50UBMIN - 20" x 19" x 50" 49 lbs.

T36UBMIN - 20" x 19" x 36" 30 lbs.

T24UBMIN - 20" x 19" x 24" 27 lbs.

T18UBMIN - 18" x 18" x 24" 23 lbs.

6 STANDARD COLORS



*Custom colors available on large fleet orders.